



# TIE - 2025 Work Plan – Memorandum of Cooperation with EIT



This action is supported by the European  
Institute of Innovation and Technology (EIT)

A body of the European Union



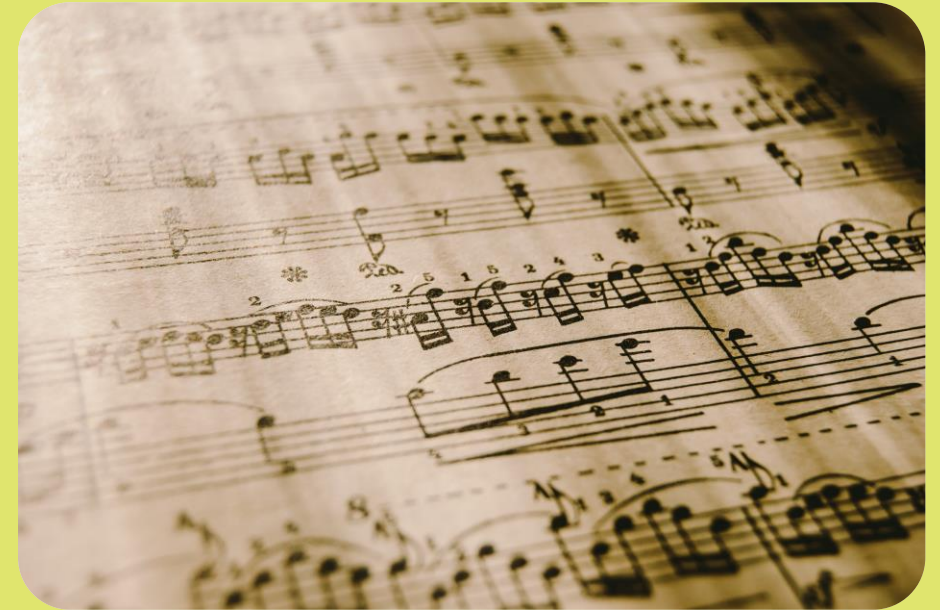


# We call it TIE

Climate KIC refers to this project as TIE taking a note (pun intended) from music.

In music a “tie” is a curved line connecting two or more notes of the same pitch, indicating they are played as a single note to create one rhythmic value.

In this project Climate KIC connect EIT-supported activities to our larger portfolio of non-EIT funded work to create added value for Europe’s climate innovation ecosystem.







# Economic competitiveness through bold action on climate

## Priority areas of intervention for 2025

(1) Fostering and reinforcing the systems innovation and entrepreneurial capacity across the Union, through **entrepreneurial education, training and coaching aligned with the [EIT Label Framework](#)**.

We focus our activities on **industry, land users, SMEs, business alliances, innovation clusters, Entrepreneurship Support Organisations (ESOs), cities and regional institutions, policymakers,** and other related organisations who can help drive positive systemic transformation in the cities, regional and industry ecosystems across Europe, especially in the [Regional Innovation Scheme](#) Regions, ensuring a pan-European coverage.

(2) Leveraging pan-European investments in place-based and cross-sectoral innovation to **tackle the regional innovation divide**. To support European competitiveness and re-industrialisation, our activities leverage Climate KIC's active [community](#) of partners, our [Co-Location Centres](#) (CLCs) in Poland, Spain and Italy, as well as EIT Community RIS Hubs. We will activate synergies and complementarities with our **place-based activities** as well as our **climate leadership** roles in EU Missions: [Climate-Neutral and Smart Cities](#), [Adaptation to Climate Change](#), [A Soil Deal for Europe](#). Our work connects and leverages thriving regional innovation valleys, practical multilevel policy implementation, and **financing and scaling of European climate change challenge solutions**.



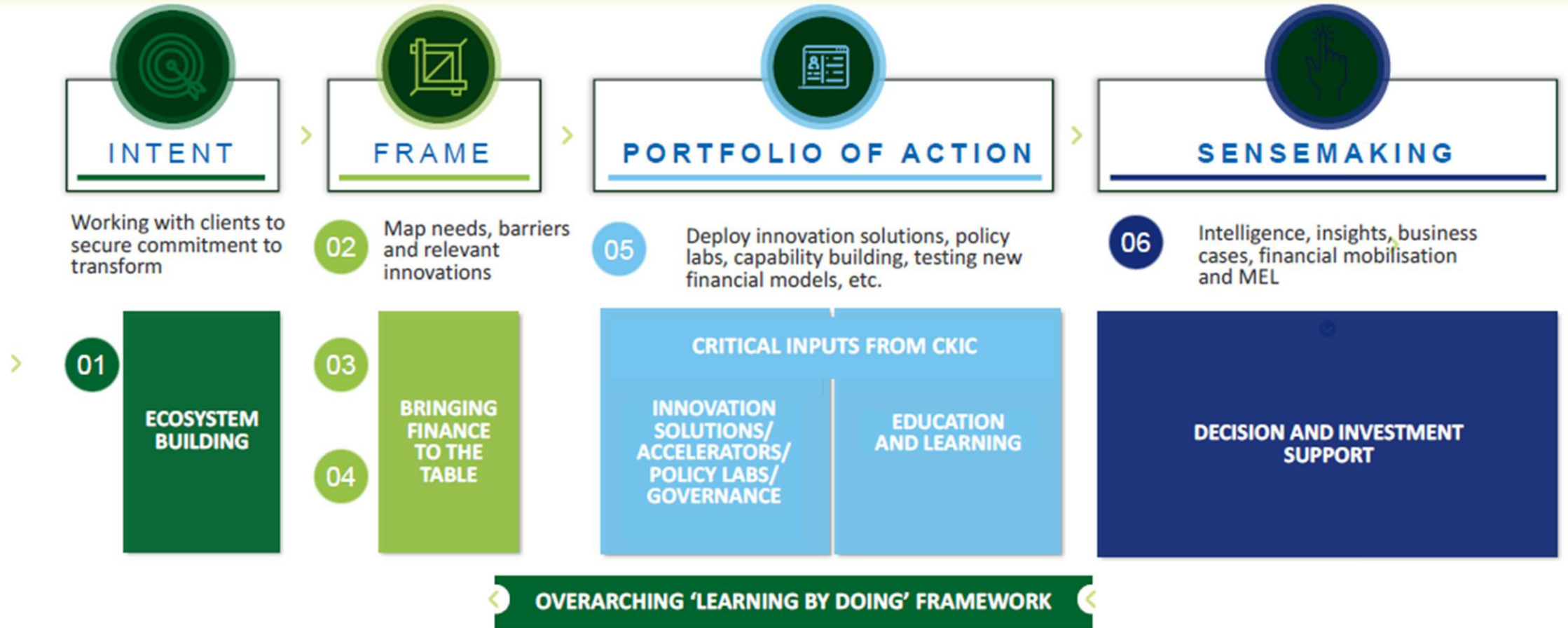
This action is supported by the European Institute of Innovation and Technology (EIT)

A body of the European Union





# Place-based Innovation Model



This action is supported by the European Institute of Innovation and Technology (EIT)

A body of the European Union





# Work Plan Overview: 1 Jan – 31 Dec 2025

Foster sustainable economic growth and competitiveness whilst delivering on Europe's climate ambitions

## WORK PACKAGE 1: PROJECT COORDINATION

Project and funder relationship management  
Monitoring, evaluation and learning

## WORK PACKAGE 2: EDUCATION AND TRAINING FOR SUSTAINABLE COMPETITIVENESS

- (1) Learning zone for European business ecosystem – Climate Leadership Academy tracks on Going beyond ESG, Clean Industry Scenarios, Industry-Government Dialogues
- (2) Strengthening innovation capacity of cities, regional and national ecosystems – Resilient regions, Sustainable Agriculture, Bioeconomy, Forestry and Landscapes, Multi-level governance
- (3) Building ESOs capacity to support innovation ecosystems – Coaching, Mentoring, Peer learning
- (4) ClimaTech Connect – accelerating start-up climate solutions
- (5) Mainstreaming Gender and Diversity, Equity and Inclusion

## WORK PACKAGE 3: PLACE-BASED TRANSNATIONAL COORDINATION ACROSS VALUE CHAINS

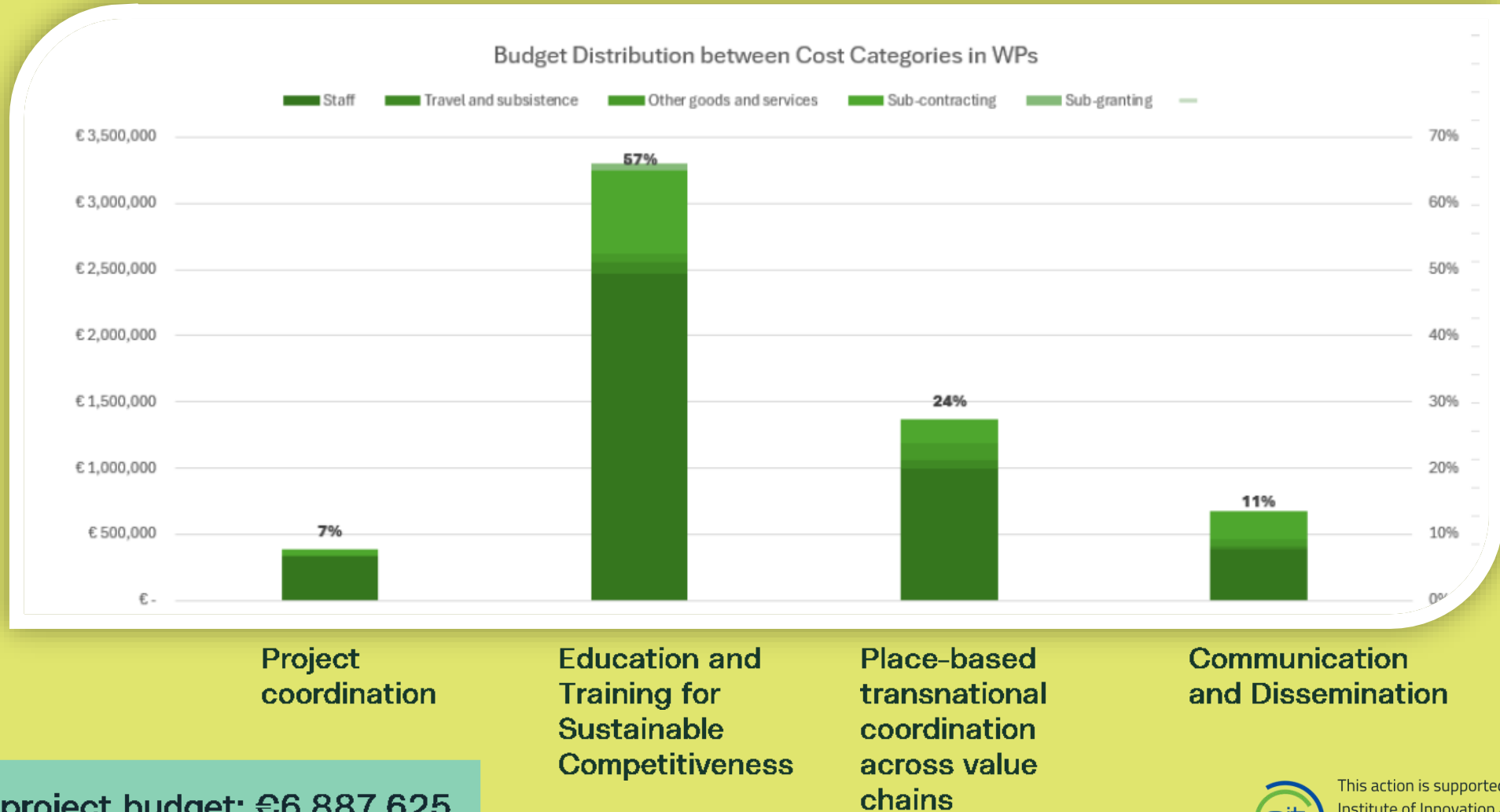
- (1) Transnational Community activities – Community CoLabs engaging knowledge triangle actors within industry value chains, Community Connect linking local to pan-European innovation networks
- (2) Cross-sectoral challenges of EU policy implementation in the context of innovation and skills gaps – feedback loops to strengthen Climate KIC portfolio of activities, e.g. Climate Leadership Academy, strengthening local innovation ecosystems, EU advocacy

## WORK PACKAGE 4: COMMUNICATION AND DISSEMINATION

Communication campaigns, media outreach, result visibility, impact stories, stakeholder engagement



# Budget Overview : 1 Jan – 31 Dec 2025



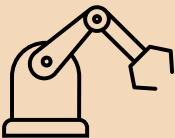
Total project budget: €6,887,625  
EU contribution: 100%



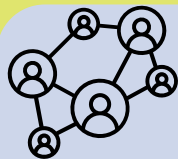
This action is supported by the European  
Institute of Innovation and Technology (EIT)  
A body of the European Union







**25 industry actors** equipped with the skills to develop clean industry scenarios for cross-sector value chains and beyond (eco)system boundaries



**15 Entrepreneurship support organisations** capable of coaching entrepreneurs and business innovators on creating business opportunities out of urban and regional climate adaptation challenges



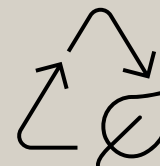
**200 farmers** with strengthened climate change resilience business practices, setting on a climate adaptation journey with support from Climate KIC Community



**50 business / industry enablers** (e.g. trade associations, industrial clusters, research centres) upskilled to exploit climate-related opportunities in emerging markets across value chains



**25 business and public institutions representatives** collaborating through innovative public-private partnerships to boost climate innovation



**45 European cities and regions** engaged in Climate KIC Community knowledge triangle integration activities to design and roll out territorial climate resilience roadmaps



# Impact - Key Performance Indicators

EIT Area	EIT KPI	Target (2025)
Leveraging investments in R&I	EITHE06.1 Investment attracted by KIC-supported startups and scale-ups	20 million
	EITHE06.2 Investment attracted by KIC supported EIT RIS start-ups and scale-ups	35%
Education	EITHE08.1 Number of successful participants in EIT professional development courses [...]	350
	EITHE08.2 Participants in non-labelled education and training with citizenship in EIT RIS countries	250
Knowledge Triangle Integration/ KIC ecosystems	EITHE10.1 Number of active partners collaborating in the KIC [...]	150
	EITHE10.2 Active partners registered in the EIT RIS countries [...]	25%
Societal impact	EITHE15.1 Impact on achieving Sustainable Development Goals	Strongly aligned
Horizontal outputs	EITHE16.1 # Results disseminated through the EC dissemination tools	7
	EITHE17.1 # People reached through communication activities	50,000
RIS-specific indicators	EITHE22.1 Number of new and established KIC Partners from RIS countries	60



This action is supported by the European Institute of Innovation and Technology (EIT)

A body of the European Union







# Want to create a tie with TIE?

ELENA TRUTNAU

[Elena.Trutnau@climate-kic.org](mailto:Elena.Trutnau@climate-kic.org)



This action is supported by the European  
Institute of Innovation and Technology (EIT)

A body of the European Union

