



Co-funded by the
European Union



Our Community Membership

EIT Climate-KIC
2022

SYSTEM
CHANGE



NOT
CLIMATE
CHANGE

Join an Innovation
Community that drives
systemic change

'Innovation-as-usual' – typically siloed and focused on 'supplying' the market with technology-led solutions – is not delivering a 1.5 degree world. We need a new model of innovation to tackle climate change.

"Limiting global warming to 1.5°C would require rapid, far-reaching and unprecedented changes in all aspects of society... [including] transitions in energy, land, urban and infrastructure (including transport and buildings), and industrial systems." IPCC Special Report, Global Warming of 1.5 °C, Summary for Policymakers

Getting real about 1.5 means that richer nations will need to carve out ambitious pathways to zero along the safest (most ambitious) possible courses outlined in the IPCC's Special Report. A target of 1.5 is feasible. But not without a fundamental transformation of major systems.

To do this, we need a community that drives a new model of innovation: one that is designed to generate options in the face of uncertainty and diversity, and to test for integrated and exponential solutions to address the complex, multi-faceted nature of the changes we need to make. This is about using innovation to trigger evolutionary dynamics in the systems that make up our world so that transformation in time is possible.

Using systems innovation as a key tool, our Community Members aim is to catalyse change in whole cities, regions, industries and value chains, working with challenge owners and visionary funders to develop and scale ambitious, mission-led programmes.

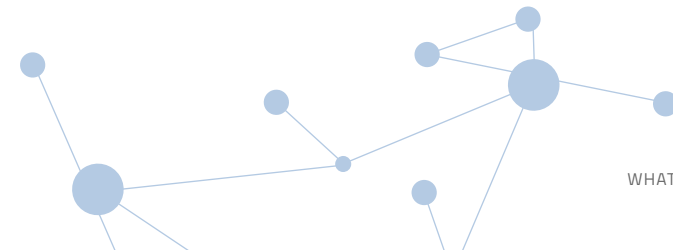
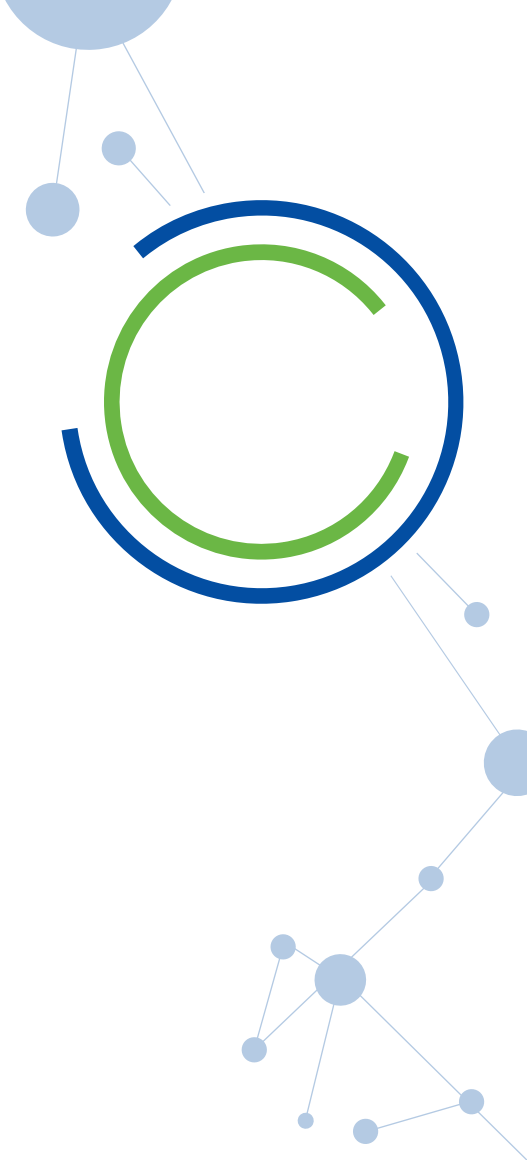


What is EIT Climate-KIC?

EIT Climate-KIC is a Knowledge and Innovation Community (KIC), working to accelerate the transition to a zero-carbon, climate-resilient society.

Supported by the European Institute of Innovation and Technology and a growing number of other EU bodies, foundations and private companies, we identify and support innovation that helps society mitigate and adapt to climate change. We believe that a decarbonised, sustainable economy is not only necessary to prevent catastrophic climate change, but presents a wealth of opportunities for business and society.

We are a community of organisations from business, academia, and the public and non-profit sectors coming together to create networks of expertise, through which innovative products, services and systems can be developed, brought to market and scaled-up for impact. Through our convening power, EIT Climate-KIC brings together the most effective groups to create the innovation that can lead to systemic change. We partner with challenge owners and funders to orchestrate combinations of solutions and implementation pathways.



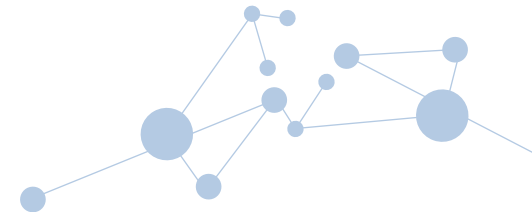


Who's in our Community and why?

EIT Climate-KIC has more than 400 global Community Members spanning universities, businesses, cities and NGOs, giving us an unrivalled breadth of knowledge and expertise. We catalyse and support innovation for climate action, but it is our Community who make that innovation happen.

The way that our Community is modelled is based on the core principle that members want to actively work together to transform city, industry, land-use, finance, and maritime systems through innovation to speed up the rate of decarbonisation and strengthen climate resilience.

The Community consists of organisations and individuals who benefit from connecting and learning from each other, innovating and orchestrating transformation together, seeking funding together and influencing key climate and innovation policies. As a whole, the Community is a transformational force to support the most ambitious climate leaders to create change faster than anyone could have predicted.



CONNECTION AND ORCHESTRATION

The Community connects members with one another to take climate action, convene others and join forces to achieve impact.



INSIGHTS AND LEARNING

The Community wants to accelerate learning amongst its members and stakeholders. Learning is co-created by the Community.



FUNDING

The Community wants to work together to attract funding for climate innovation.



POLICY

The Community is connected to and interacting with the EU policy landscape.

Our Community Memberships

EIT Climate-KIC's membership model is built on three levels of engagement. The type of membership you choose is based on what you want to do within the Community and the kinds of benefits and services you want to receive from EIT Climate-KIC.

There are three membership types: **Drive, Learn, and Explore.**



DRIVE MEMBERSHIP

Drive Membership is suitable for organisations who have a high commitment to system transformation and are already engaged in climate innovation activities.

Drive Members are motivated by taking an **active role in the Community**, in **orchestration of systemic approaches** in local and pan-European contexts and in **collaborative innovation**, sharing and learning with and from other members.



LEARN MEMBERSHIP

Learn Membership is suitable for organisations who want to **increase their understanding** about systems transformation, regeneration, decarbonisation and climate resilience.

Learn Members are motivated by **sharing insights with and learning from others.**



EXPLORE MEMBERSHIP

Explore Membership is suitable for organisations who are **new to the topic** of system transformation, regeneration, decarbonisation, climate resilience or **starting their community-based innovation** journey.

Explore Members are motivated to **self-explore** the Community ecosystem.

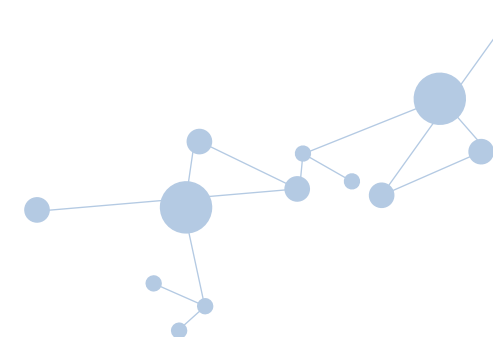
Community Member benefits and services

The below table shows the different benefits and services that each type of Community Member has access to:

BENEFITS AND SERVICES OVERVIEW	DRIVE	LEARN	EXPLORE
--------------------------------	-------	-------	---------

COMMUNITY EVENTS, SYSTEMS AND NETWORKING BENEFITS AND SERVICES

Access to the basic functions of our Community platform ClimateHIVE	○	○	○
Regular news and updates from EIT Climate-KIC	○	○	○
Relationship management support from a dedicated member our Community Team	○		
Invitations to attend Community events hosted by EIT Climate-KIC	○	○	○
Invitations to attend tailored events hosted by EIT Climate-KIC, on specific member interest areas	○	○	
Invitations to attend events hosted by Community Members	○	○	
Opportunities and support to host events with and for members of the Community	○		
Tailored news and updates from EIT Climate-KIC based on specific member interest areas	○		
Opportunities to be profiled in events hosted by EIT Climate-KIC	○		
Support with matchmaking to form consortia and climate action collaborations	○	○	
Access to view and explore Community Groups	○	○	○
Access to join Community Groups	○	○	
Access and support to create your own digital Sub-Community	○		



BENEFITS AND SERVICES OVERVIEW	DRIVE	LEARN	EXPLORE
--------------------------------	-------	-------	---------

FUNDING BENEFITS AND SERVICES

Regular updates on funding opportunities available to the Community	○	○	○
Tailored updates on funding opportunities available to the Community, based on member interests	○		
Access to early information about funding calls to be launched by EIT Climate-KIC	○	○	○
Access to insights learned by the Community to increase funding chances	○	○	
Invitations to Community matchmaking funding events hosted by EIT Climate-KIC	○	○	○
Access to tailored online forums for regular sharing between members on funding approaches and proactive targeting	○		
Full access to live sessions on funding insights from EIT Climate-KIC, other Community Members and external experts, with opportunity to actively join Q&A	○		
Access to recordings of funding insights from EIT Climate-KIC, other Community Members and external experts	○	○	○

INSIGHTS AND LEARNING BENEFITS AND SERVICES

Access to our online courses and trainings	○	○	○
Access to our digital bank of insight reports	○	○	
Access to our online events and bespoke trainings	○	○	

POLICY BENEFITS AND SERVICES

Access to regular EU policy briefings from the Policy Team	○	○	○
Access to tailored EU policy briefings from the Policy Team, based on specific member interest areas	○		
Invitations to attend round-table policy events, connecting with EU policymakers on specific topics of interest to the Community	○	○	
Access to a calendar and information about relevant EU meetings	○	○	○

ORCHESTRATION OF IMPACT BENEFITS AND SERVICES

Tailored support for orchestration of systems innovation and systemic change effects in local and regional contexts connected to pan-European and national programmes.	○		
--	---	--	--



2022

Community Membership fees



The annual fee of the Community Membership is determined by two things:

i) What your organisation wants to do in the EIT Climate-KIC ecosystem, and the level of engagement and types of benefits and services you want to receive.

ii) The size of your organisation – Non-SME, SME, or Micro-SME.

Membership fees are adjusted according to organisation size so that EIT Climate-KIC can be an equitable and accessible Community for smaller organisations and start-ups.

Please note that EIT Climate-KIC applies the European Commission's definition of Small and Medium Enterprises (SMEs), which can be found [here](#). If you are unsure about whether your organisation is an SME, there is an SME self-assessment questionnaire available [here](#).

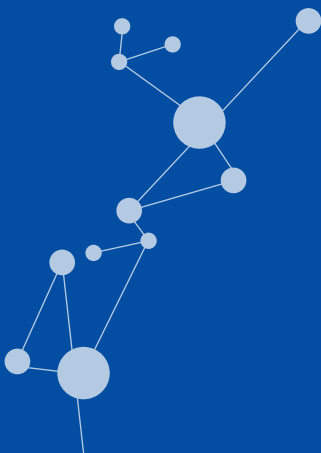
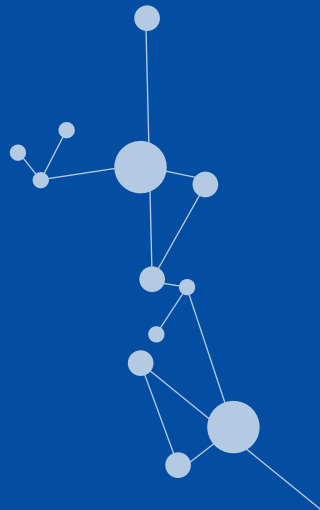
	 DRIVE	 LEARN	 EXPLORE
Non-SME	12,500 €	5,000 €	1,000 €
SME	5,000 €	2,000 €	500 €
Micro-SME	1,000 €	250 €	100 €
Membership fees per year			



How to join the Community



Please visit www.climate-kic.org/jointhecommunity to find out more about the Community and the simple membership application process. If you would like more information or to speak to someone from the Community Team, please contact community@climate-kic.org.



Co-funded by the
European Union



www.climate-kic.org