

# ***Locally produced food as part of the new life in Brunnshög, Lund***

***Christian Wilke,  
Lund Municipality***





***Brunnshög is large scale  
urban development in the  
north-east parts of Lund:***





*Agriculture*

*Urbanity*

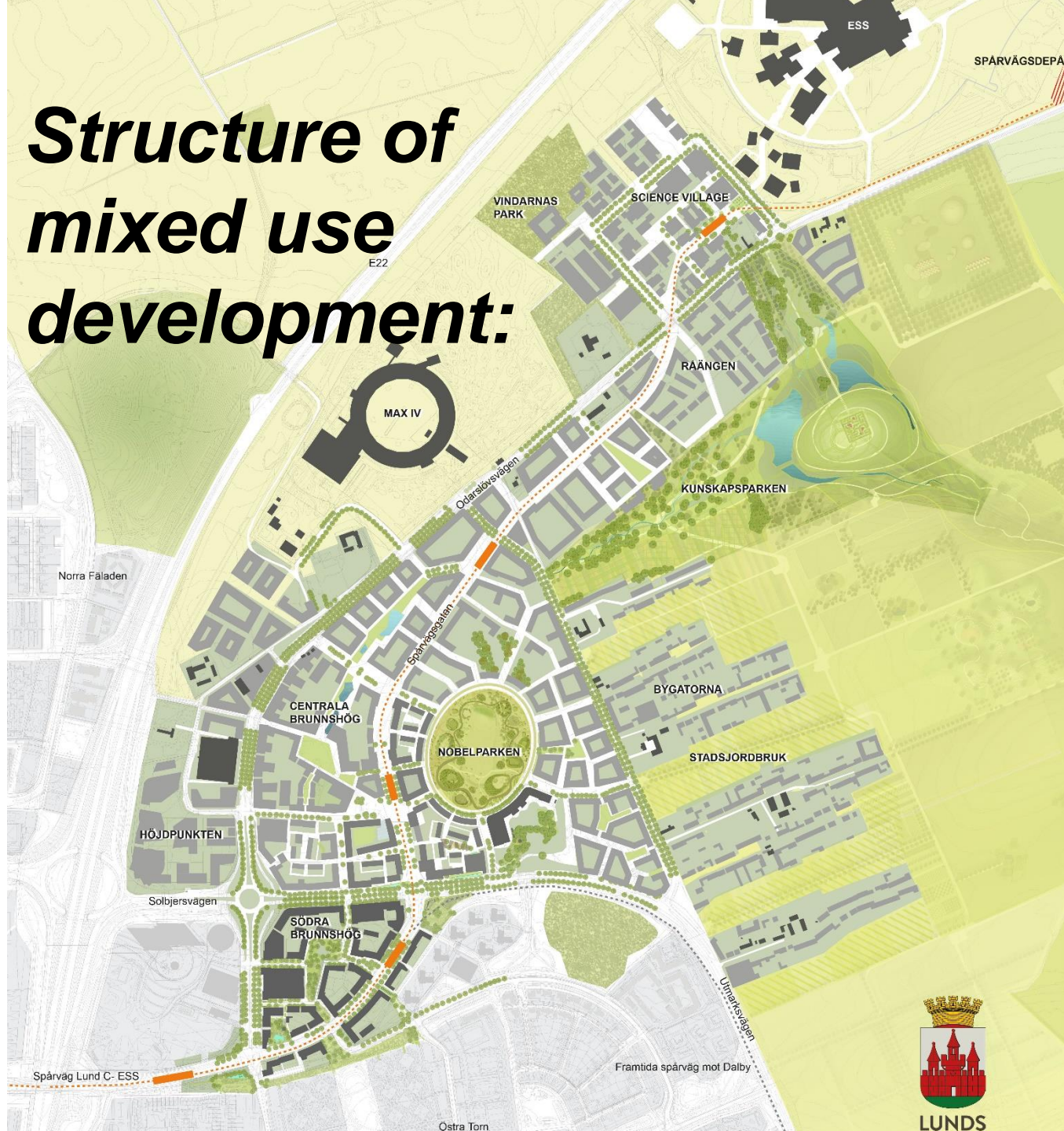


- 225 hektar
- Cirka 1 300 000 sqm BTA
- 40 000 working, living or studying
- 2017-2055





# Structure of mixed use development:







LUNDS  
KOMMUN



LUNDS





**Connected:**

**PATH OF KNOWLEDGE**

ESS

Science Village  
Scandinavia

MAX IV

**BRUNNSHÖG**

Sony

Mobile  
Heights

Ideon

Medicon  
Village

LTH

Lund  
University

SUS

Lund C





***Opens early 2020:***






## MAX IV laboratory synchrotron light facility

Opened by the King in June 2016 (Estimated cost 6 billion SEK)





ESS the worlds most powerful neutron source – under construction  
(Cost: 16 billion SEK) 17 countries contributing. First use 2019.



# The system for Residual heating on Brunnshög

**COOL DH**  
COOL DISTRICT HEATING

1 Waste heat recovery

2 Prosumers

8 Business models /  
Legislation /  
Knowledge sharing

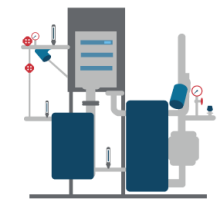
4 Network layout  
and control

7 LTDH applications:  
Ground heat

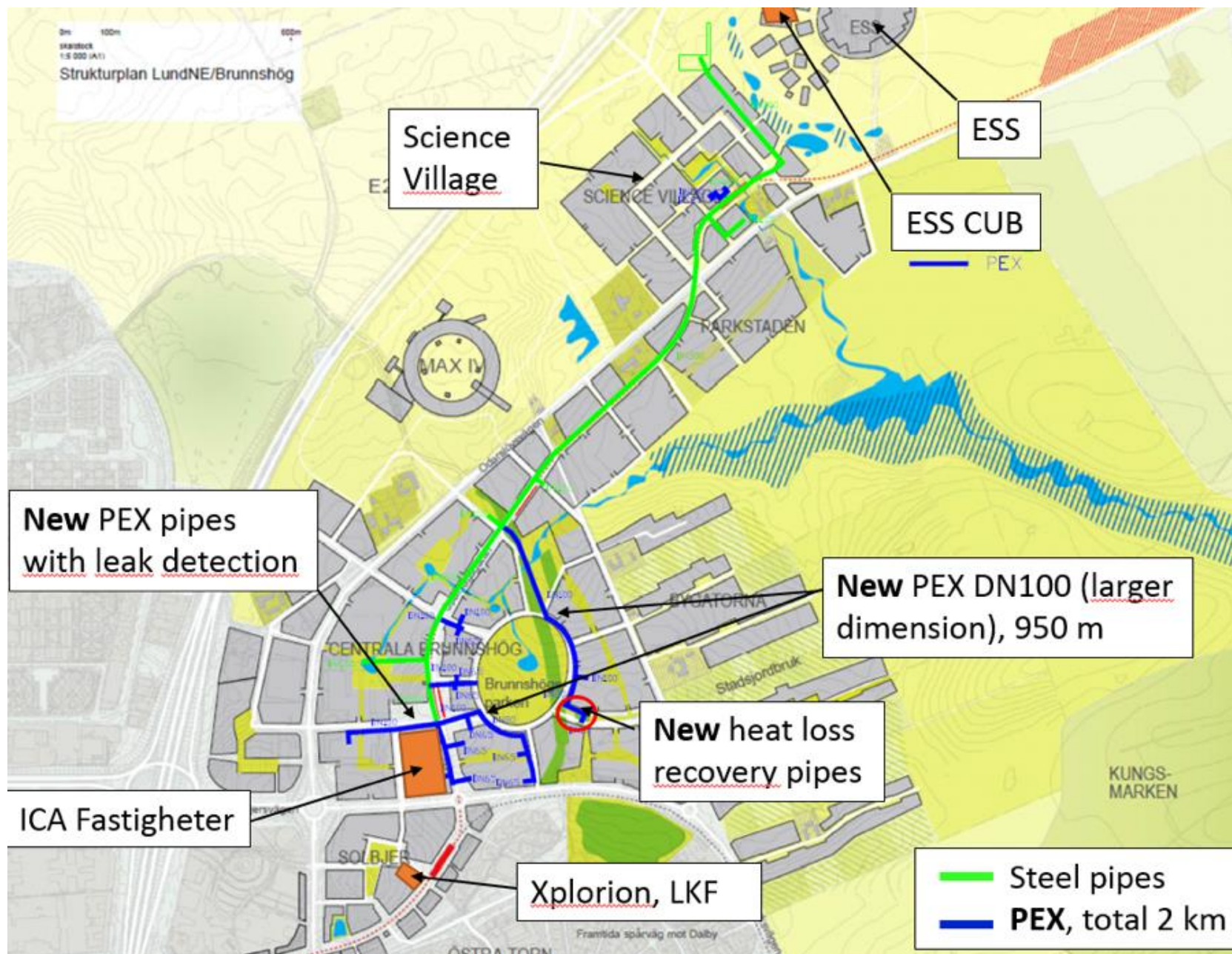
3 Pipe design and materials

6 Avoiding risk  
of Legionella

5 Demand side  
installations









# ***Brunnshög planning Intentions and Visions:***





# Where Heart meets Brains..





# Where Heart meets Brains..



**And Stomach.....?**



# A World leading science, innovation and living Environment

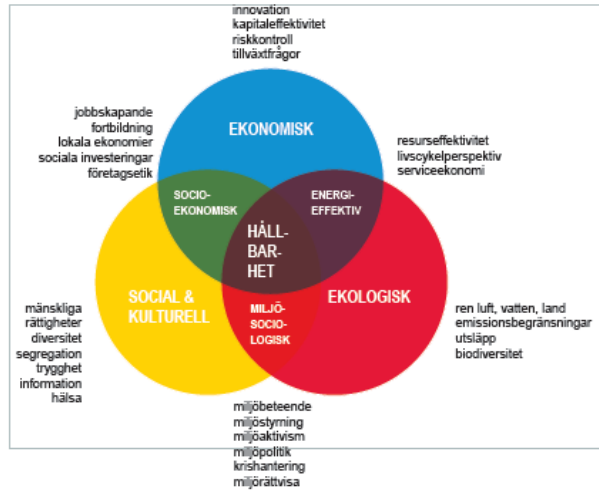
A World leading **science, innovation and living** environment i developed with MAX IV and ESS as starting engines

Brunnshög will be a knowledge intense and global living environment where new solutions for city development **continually is researched**

An international **destination** for science, culture and recreation inspiring new discoveries







Minimize climate impact

Balance the use of high quality farm land

Maximize experiences



Minimize climate impact

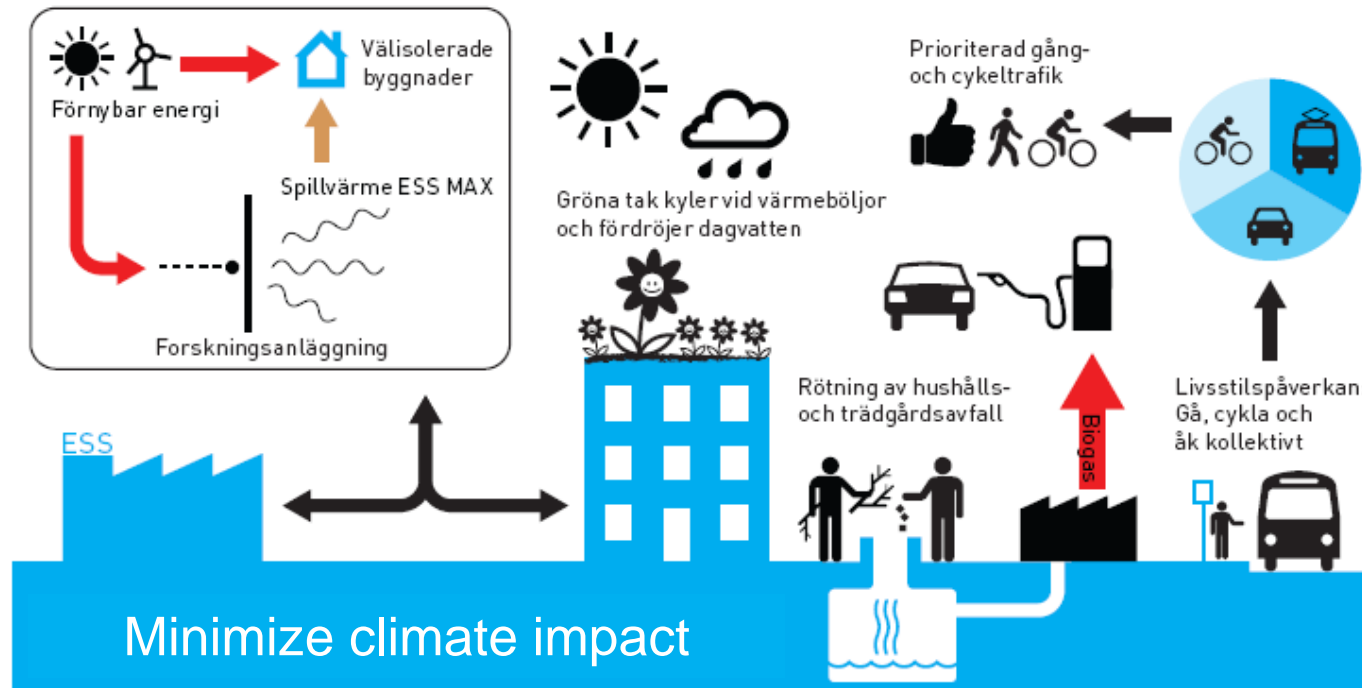
Balance the use of high quality farm land

Maximize experiences



# Energy production

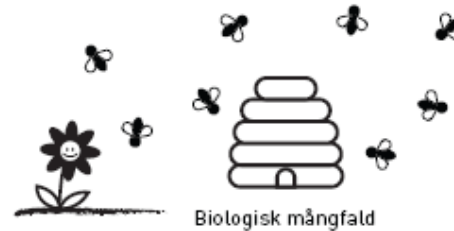
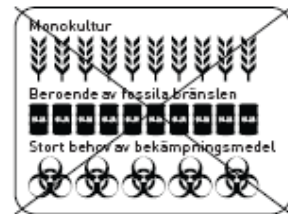
- 100 % renewable, locally produced energy in the buildings
- 150% renewable, locally produced energy for heating, transport and electricity - the city as a power plant – longterm goal





## Efficient land use:

- *the level of exploitation should be at least 1,0*
- *100 % of the nutrients in removed masses will be returned to farmland*
- *40 % of built land should be able to be restored into farmland*
- *50 % of todays farming potential (2011) should be able to be compensated with urban farming no later than 2025*



Varsam hantering av jordlagren.  
Ta till vara näringsämnena.

Skapa odlingsmöjligheter på  
Tak och som vertikalodling



Hårdgöra så lite  
markytor som möjligt

Byggande med höga  
exploateringsstal.



Undvik deponier med bortförslad  
jord som snabbt mister sina goda  
egenskaper.



Balance the use of high quality farm land



**For every individual phase of expansion an "experience plan" will be put together including:**

- *meeting places*
- *mixing use*
- *desired levels of noise/sound, visual impressions/visual problems, scent/smell, taste tactile experiences*



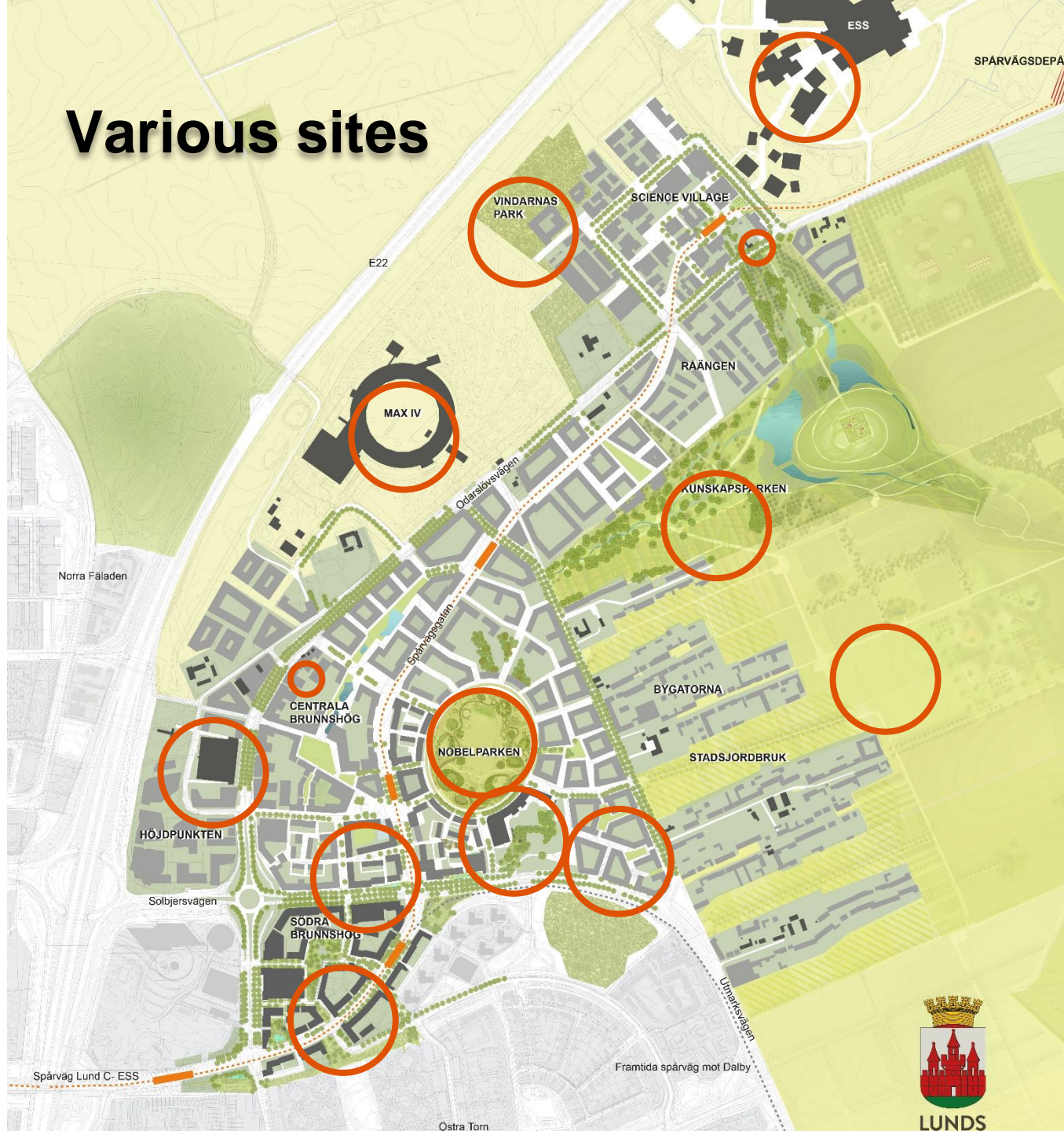


# ***Urban Food, what are we doing?***





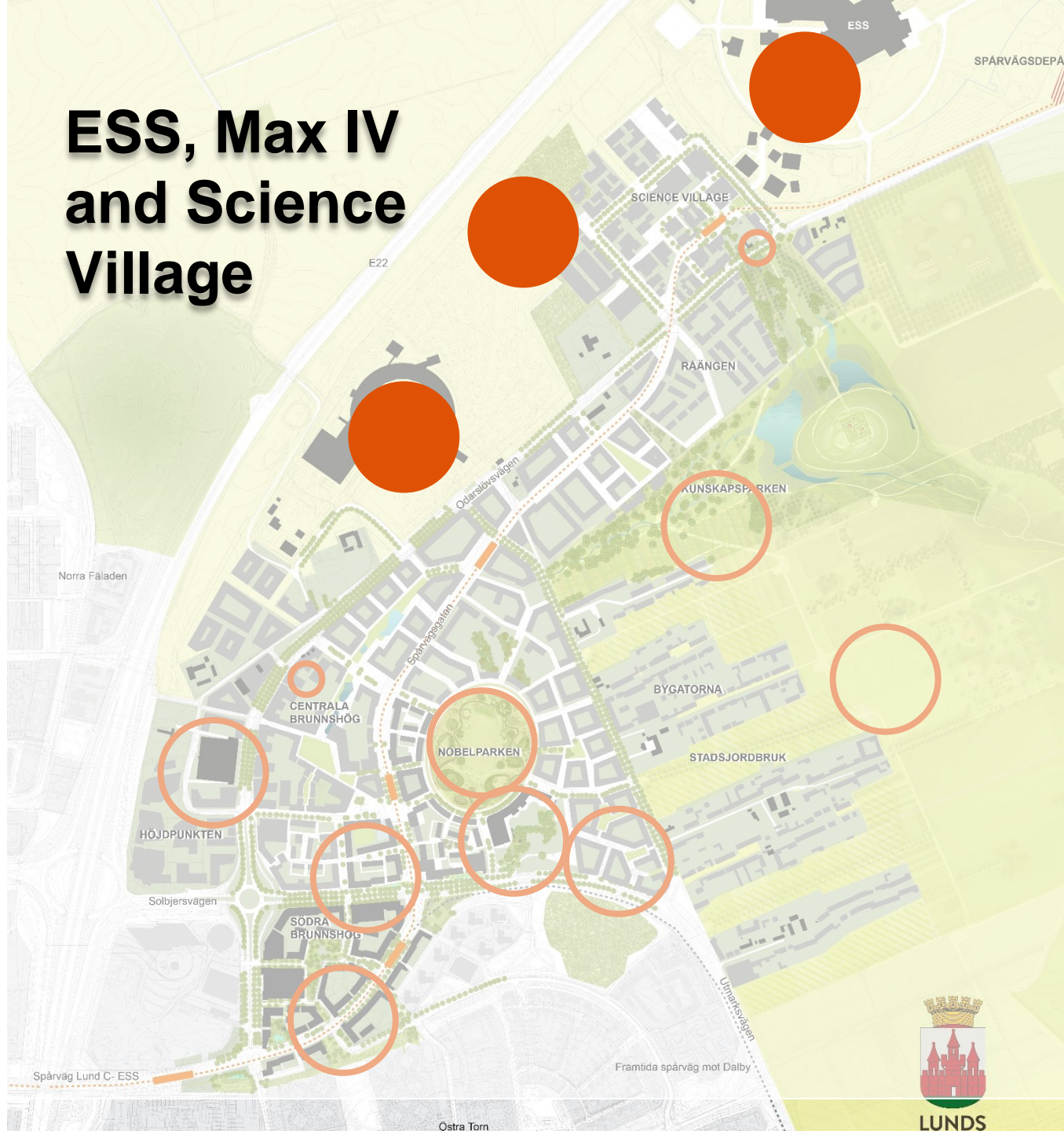
# Various sites







# ESS, Max IV and Science Village





# Urban Farming





# Urban Farming, allotment

Huge interest – teaching, NGOs and groups,  
started 2013 on a temporary location.  
Will be part of:







# Park of Knowledge





## Park of Knowledge





- Park of Knowledge
  - Allotment area/urban farm at Kunskapsparken
  - Pedagogy- How is our food produced?





## Park of Knowledge

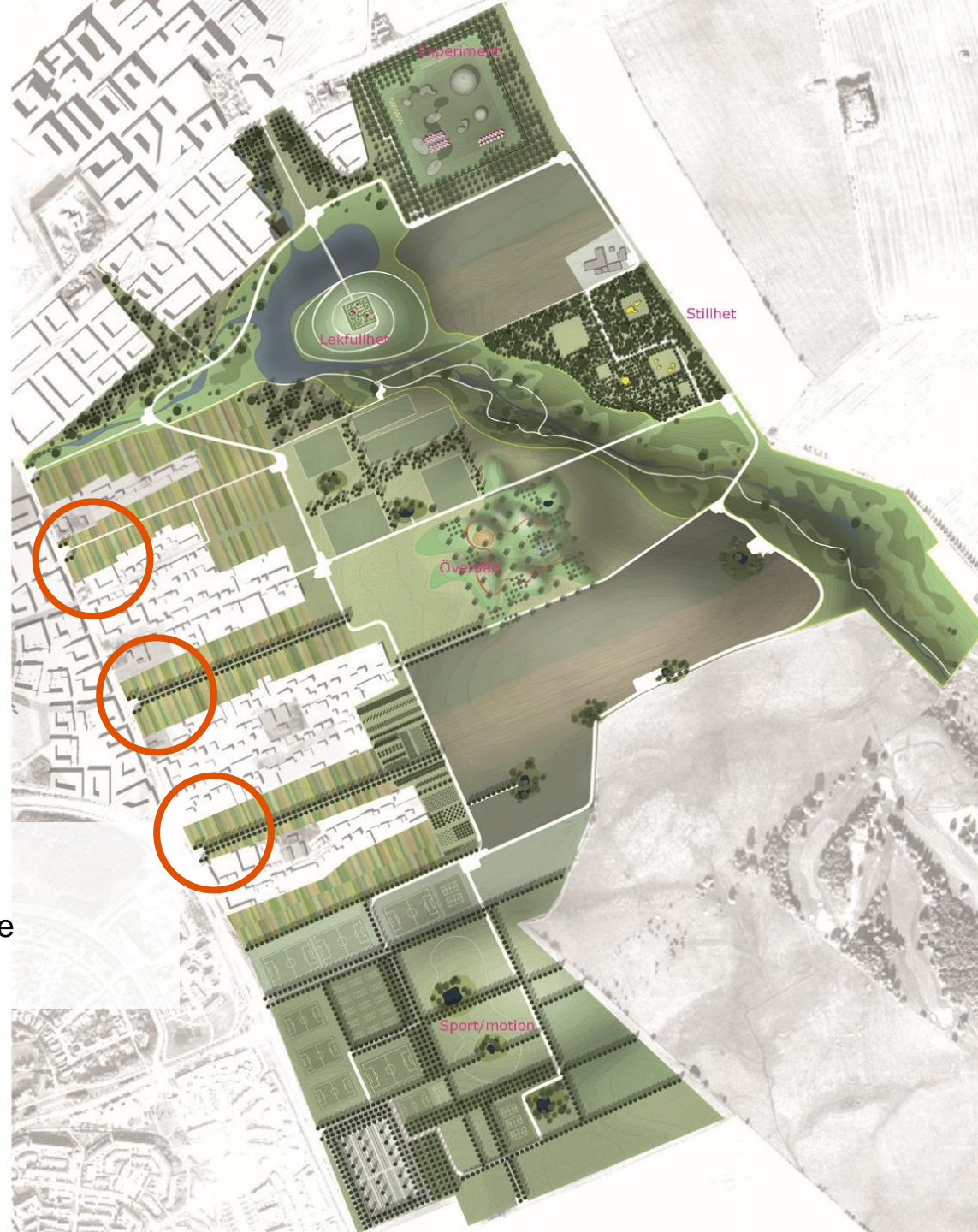
Run by urban farmers, NGO's and Lund municipality in collaboration, -- opens -2021 part of the park where ambitious growers meets curious park visitors





## Village streets)

Possibility of small scale agriculture





# The "village" streets





# The Nobel Park





# The Nobel park in the heart of Brunnshög

– Community park with thematic zones





# The Nobel park in the heart of Brunnshög

– Community park with thematic zones





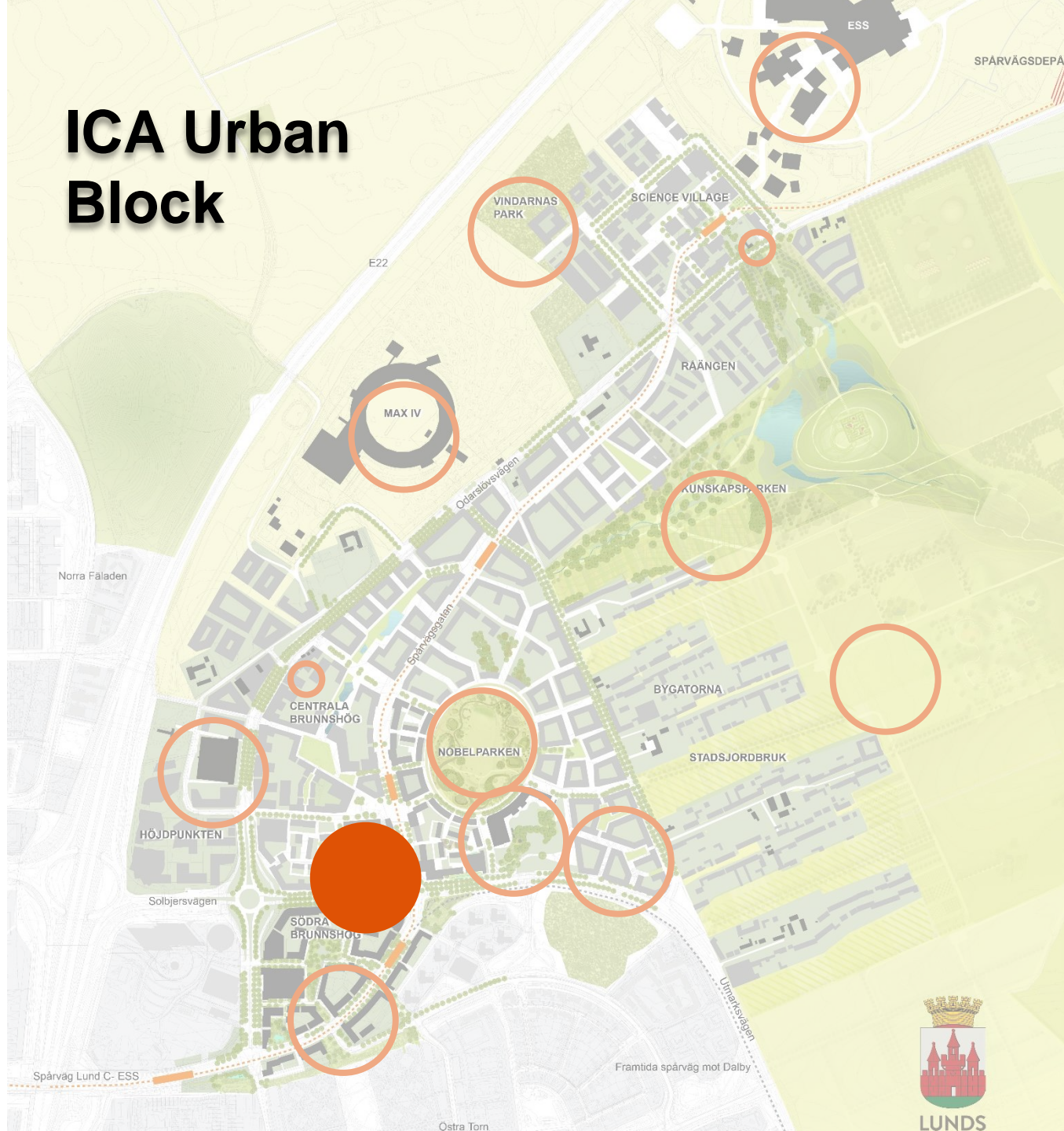
# Innovative green public space







# ICA Urban Block





**Urban block facing the new central square with ICA food store, Pharmacy, restaurants, housing etc**





# Communal garden



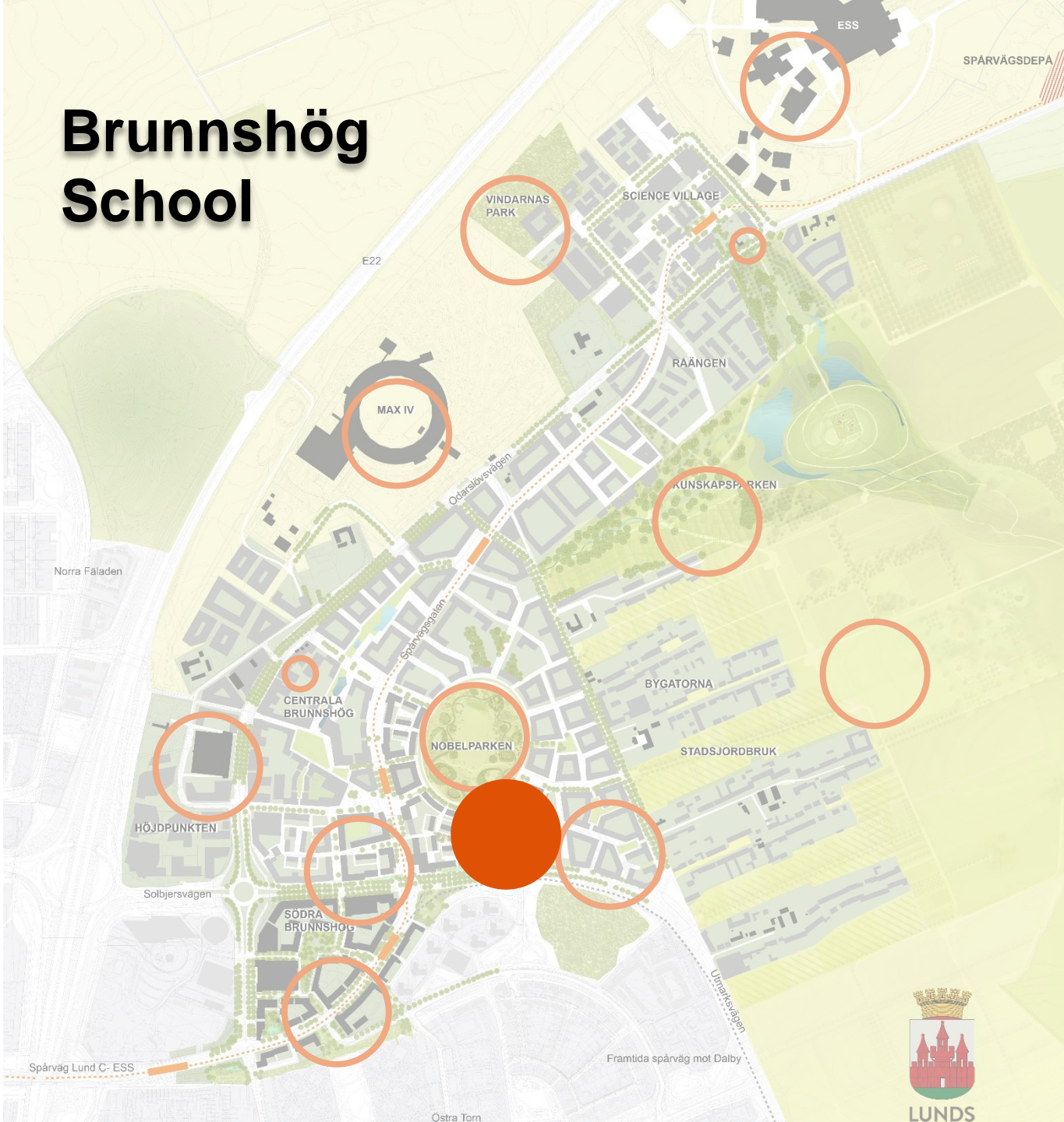








# Brunnshög School





# Brunnshög School





# Brunnshög School







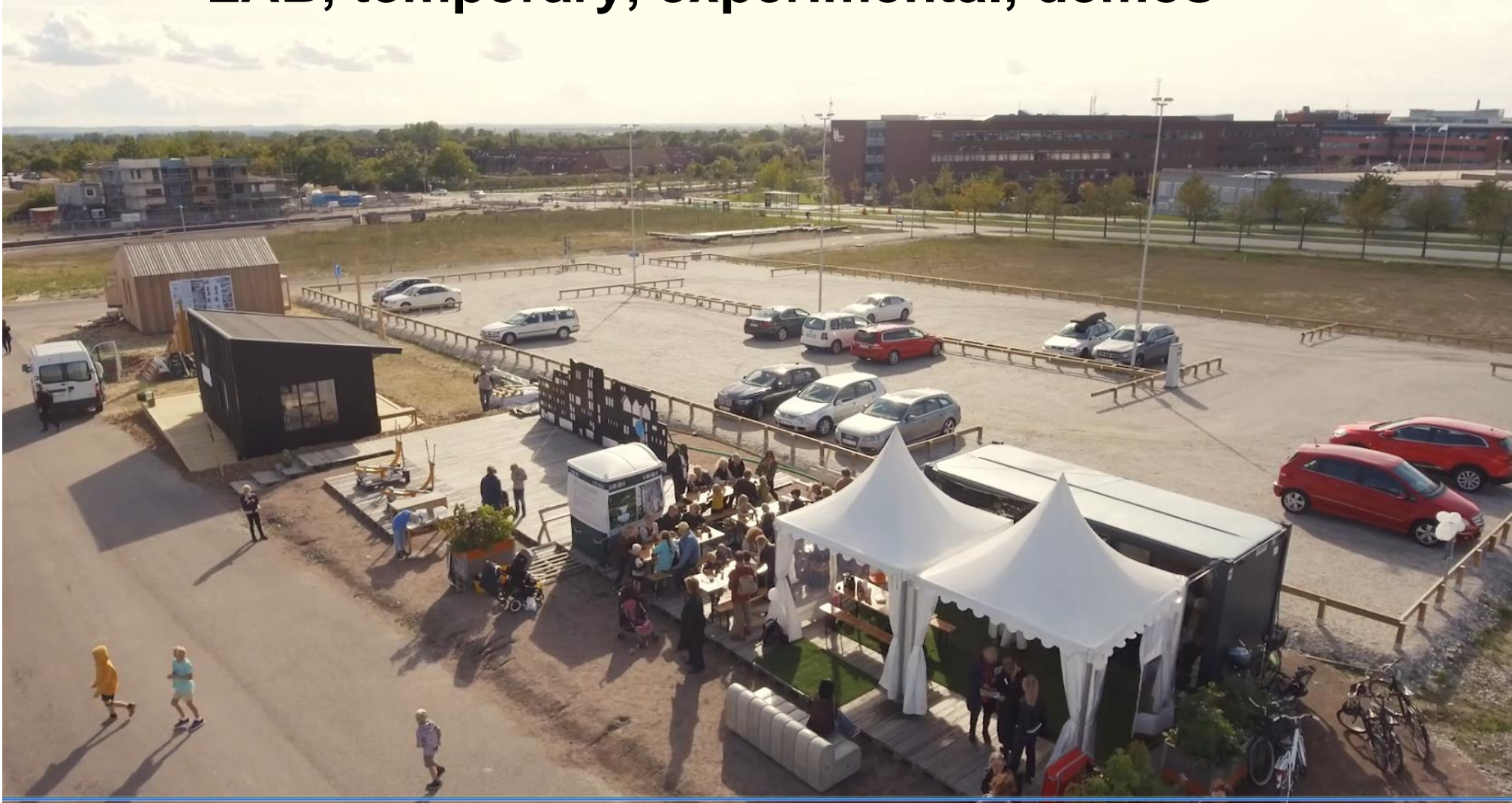
# Brunnshög LAB





# Brunnshög

## LAB, temporary, experimental, demos







# Housing projects





# Land awarded based on proposed sustainable solutions, partners and level of innovation

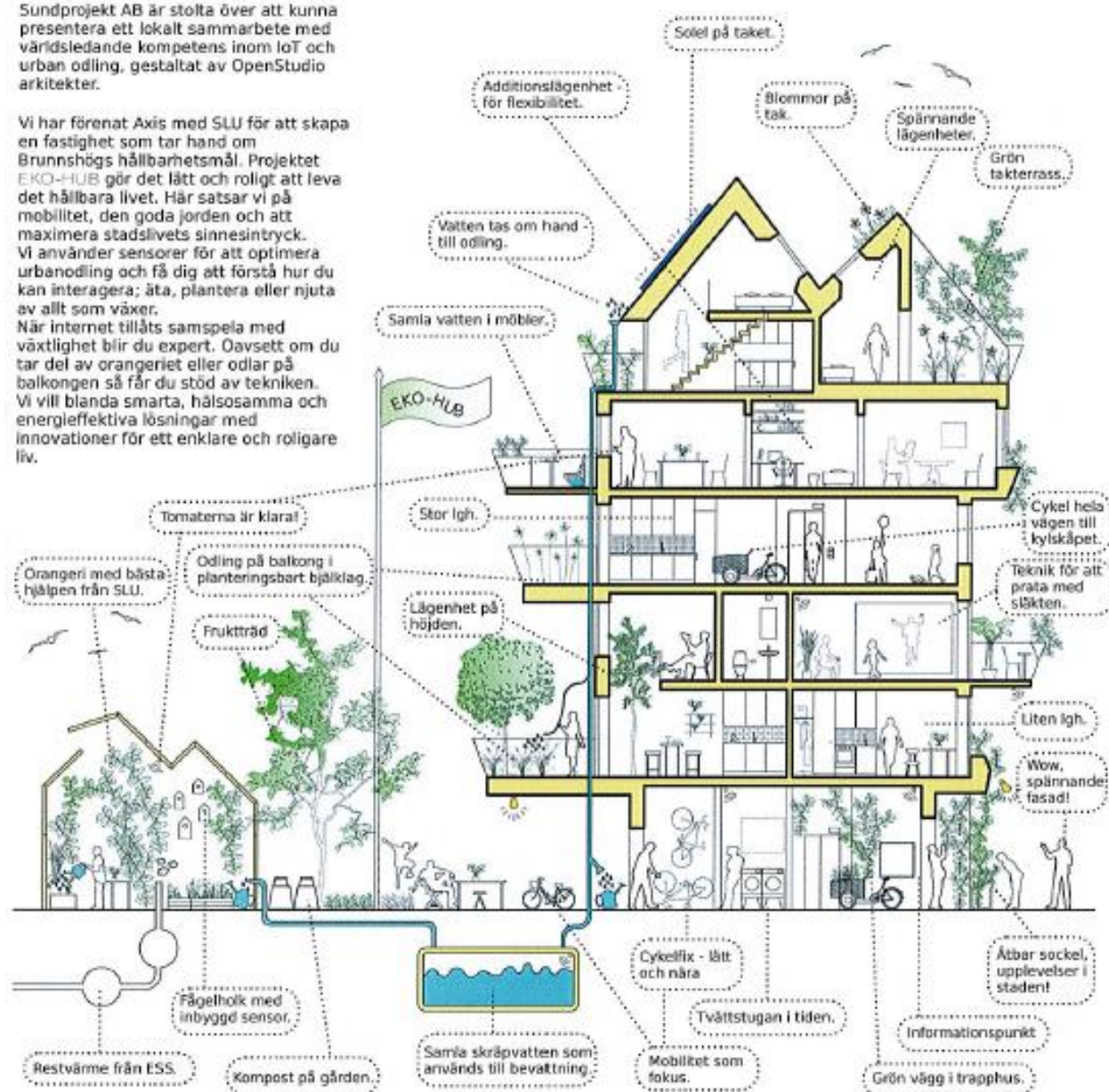




# EKO-HUB

Sundprojekt AB är stolta över att kunna presentera ett lokalt samarbete med världsledande kompetens inom IoT och urban odling, gestaltat av OpenStudio arkitekter.

Vi har förenat Axis med SLU för att skapa en fastighet som tar hand om Brunnshögs hållbarhetsmål. Projektet EKO-HUB gör det lätt och roligt att leva det hållbara livet. Här satsar vi på mobilitet, den goda jorden och att maximera stadslivets sinnesintryck. Vi använder sensorer för att optimera urbanodling och få dig att förstå hur du kan interagera; äta, plantera eller njuta av allt som växer. När internet tillåts samspela med växtlighet blir du expert. Oavsett om du tar del av orangeriet eller odlar på balkongen så får du stöd av tekniken. Vi vill blanda smarta, hälsosamma och energieffektiva lösningar med innovationer för ett enklare och roligare liv.





# LKF Explorion







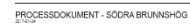
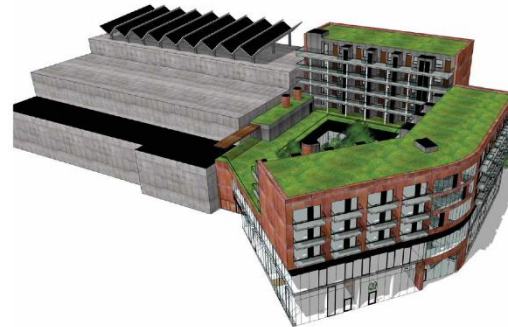




**KVARTERET HAMMOCKEN, LUND.** Vy från Brunnsögsgatan  
PLAN-001 | BYGGNADSKONST I LUND AB | ARK. MSA PLADE HANNOVRS | 2016-2022



FASAD MOT NORR







# ***Brunnshög Living with the landscape:***





Homepage

Facebook

Instagram

Visitors Centre

Newsletter 2-3 times/year



[www.lund.se/brunnshog](http://www.lund.se/brunnshog)



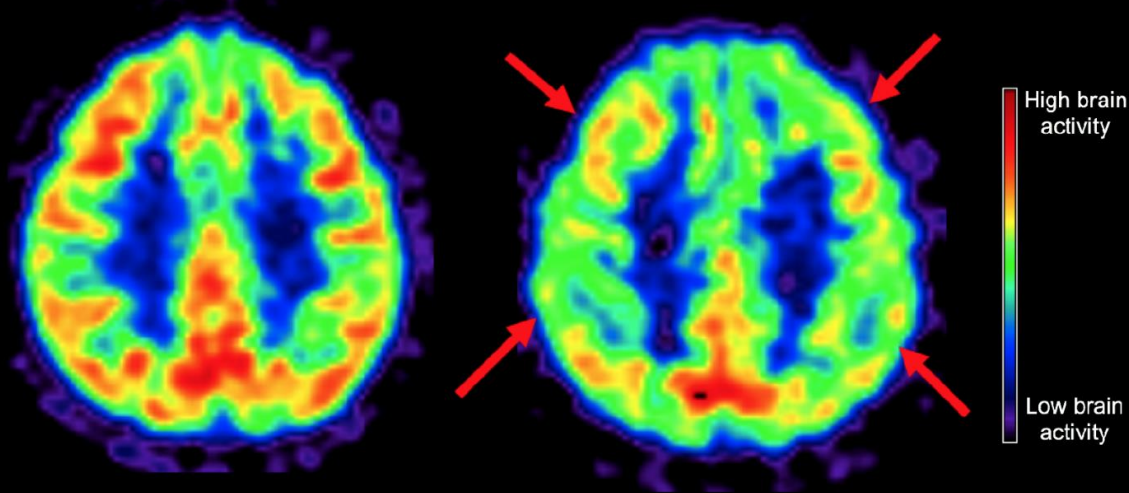






MEDITERRANEAN DIET

WESTERN DIET







# Suggested sites











## ***-Brunnshög location***

- Balance*
- How much is claimed?*
- Transport*

## ***-Brunnshög intentions and visions***

- Balance, Minimize. Maximize*
- Resilience*

## ***-Brunnshög what do have***

- Urban farming*
- Honung*
- Holma Folkhögskola*
- Nobelparken*
- Park of knowledge*
- ESS and MAX, food science and residual heat*
- Restaurants Brunnshögs Pasta och Mex 4*

## ***-Partners and Cooperation***

- Råången*
- Science Village*
- ICA fastigheter*

## ***-How do we make it happen***

- Sciencesprojekt?*
- School*
- Explorion*
- Sundsprojekt*
- Markanvisningar*
- Labbet*



***Christian Wilke***





- Agricultural location***
- ICA***
- Urban farming***
- Holma Folkhögskola***
- Nobelparken***
- Park of knowledge***
- ESS and MAX, food science and residual heat***
- Balance***
- Transport***
- Sciencesprojekt?***
- Råängen***
- Restaurants Brunnshögs Pasta och Mex 4***
- How much is claimed?***
- Explorion***
- Sundsprojekt***
- Markanvisningar***
- Labbet***



***Christian Wilke***